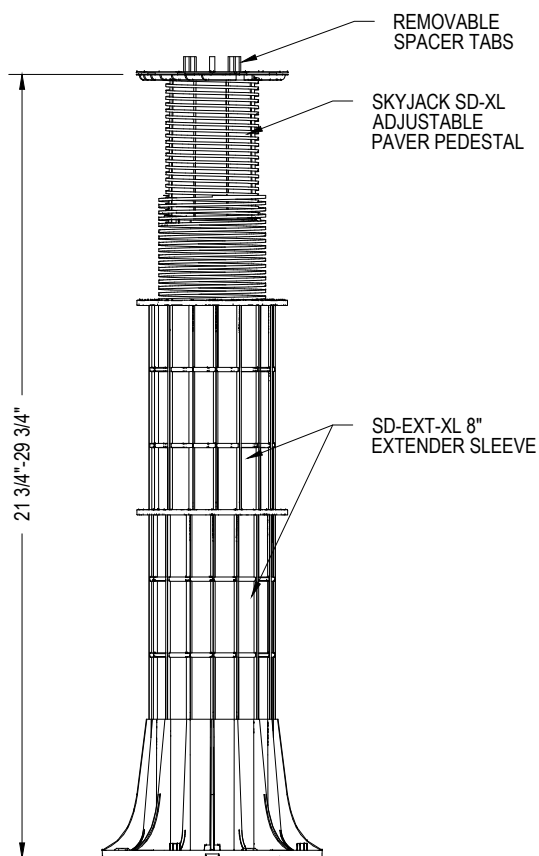
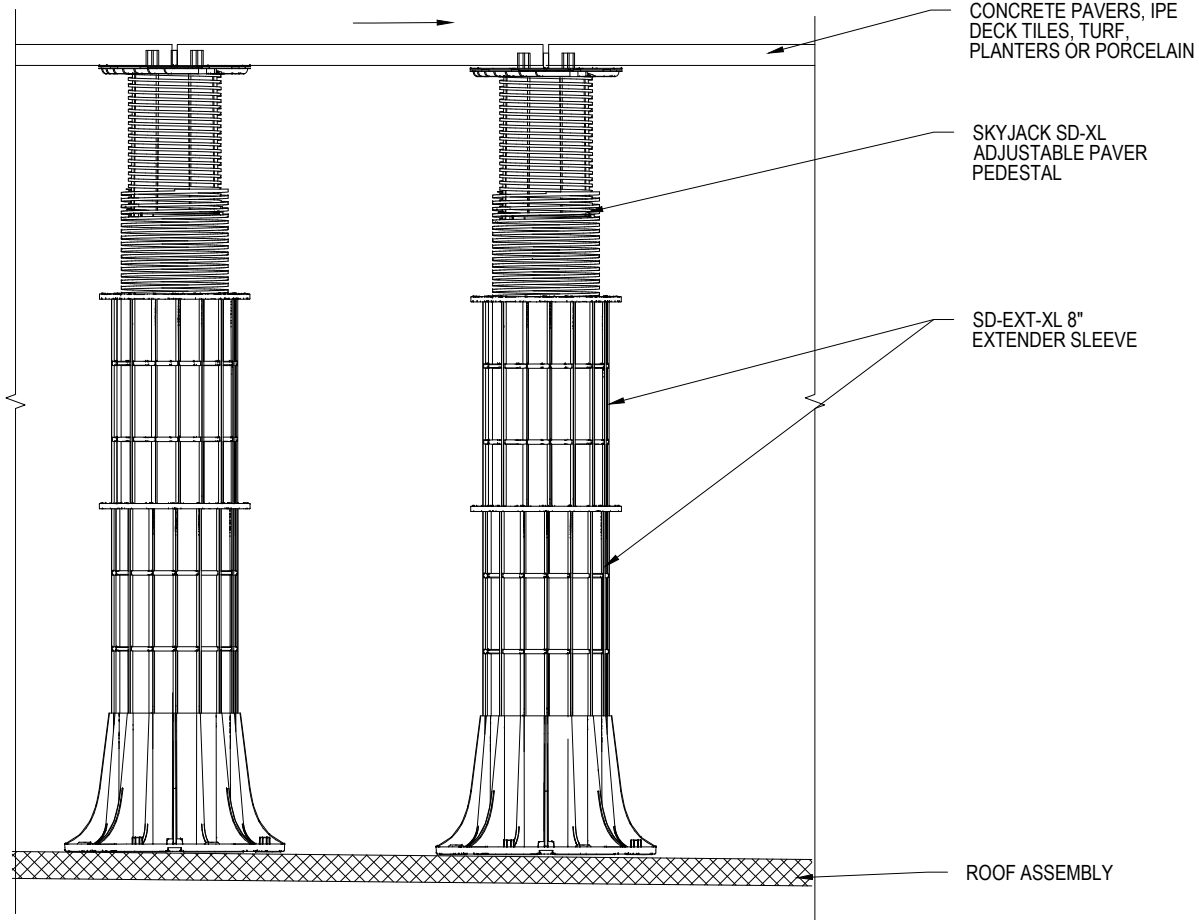


PLAN VIEW



FRONT ELEVATION
SD-XL + 2 SD-XL-EXT WITH TOP PLATE

FOR SLOPES GREATER THAN 1/4" PER FOOT, ADD SD-XL-SLH SELF-LEVELING HEADS TO
COMPENSATE FOR SLOPES UP TO 7%.
USE SD-BSC BASE SLOPE CORRECTOR TO COMPENSATE FOR SLOPES UP TO 8%.
ADD BOTH PRODUCTS TO COMPENSATE FOR SLOPES UP TO 15%



INSTALLATION DETAIL
TYPICAL PEDESTAL APPLICATION

SPECIFICATIONS


MATERIAL	FULLY RECYCLABLE HIGH DENSITY COPOLYMER POLY PROPYLENE (HDCPP)
TEMP. RANGE	-20 - 200 DEGREES FAHRENHEIT
WEIGHT CAPACITY	2,150 LBS PER PEDESTAL

NOTES:

- **BOX CONTENTS:** ONE FULLY ASSEMBLED SD-XL ADJUSTABLE PAVER PEDESTAL WITH 3/16" GAP SPACERS*. UP TO 125 PCS PER BOX.
* 1/8" GAP SPACERS ARE AVAILABLE UPON REQUEST

ADJUSTABLE PAVER PEDESTAL

SKYJACK: SD-XL + 2 SD-XL-EXT - 21 3/4"-29 3/4"

DWG. NO.	DATE: 6/20/25	
SHEET	BY:	